



**RIPE
NCC**

Using RIPE Atlas

Christian Teuschel

- Network for active Internet measurements
- **8,500+** concurrent measurements
- Collecting **~3,000** results per second
- **8,500+** measurement devices (probes)

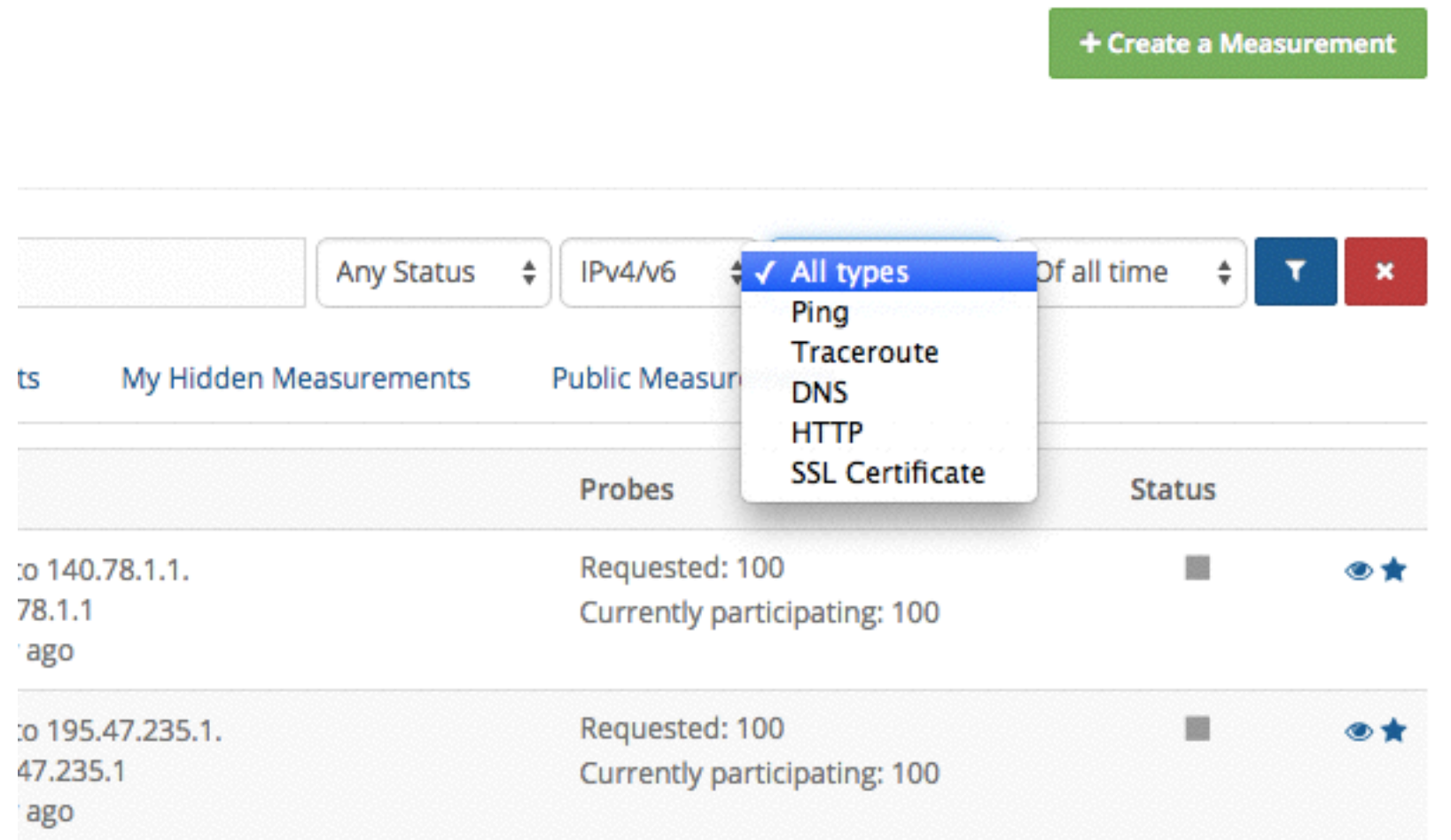


Where is RIPE Atlas?

| 3



- Types:
 - Ping
 - Traceroute
 - DNS
 - SSL Certificate
 - HTTP (new)
- Categories
 - Built-in
 - User-defined



Find, use & create measurements

RIPE NCC RIPE NETWORK COORDINATION CENTRE

Christian Teuschel

RIPE Database (Whois) Website

Search IP Address or ASN

Manage IPs and ASNs > Analyse > Participate > Get Support > Publications > About Us >

You are here: Home > Analyse > Internet Measurements > RIPE Atlas > Measurements

Measurements

+ Create a Measurement

Filter by target and/or description

Any Status IPv4/v6 All types Of all time

Mine Favourites Hidden Public

Id	Type	Target	Description	Probes	Time (UTC)	Status
2048553	○ IPv4 ping	ns1.transtelecom.net	Example at tutorial	2	2015-06-09 10:06 2015-06-09 10:15	■
2037395	○ IPv6 traceroute	2002:899e:3a91:b:ea94:f6ff:...	ixp-country-jedi to 2002:899e:3a91:b:ea94:f6ff:...	10	2015-06-05 10:44 2015-06-05 10:50	■
2037394	○ IPv6 traceroute	2001:4208:104:2:a2f3:c1ff:f...	ixp-country-jedi to 2001:4208:104:2:a2f3:c1ff:f...	10	2015-06-05 10:44 2015-06-05 10:50	■

Documentation: <https://atlas.ripe.net/docs/>

RIPE Atlas - Documentation

General

- Announcements
- Frequently Asked Questions
- RIPE Atlas Service Terms and Conditions
- Security Disclosures
- Known bugs and limitations

How to Use RIPE Atlas

- Getting started with your probe
- Probe static network configuration (Advanced)
- The credit system
- User-defined measurements (UDM)
- Probe tags

Anchors

- RIPE Atlas anchor services
- RIPE Atlas Anchor Installation Instructions

APIs and Data

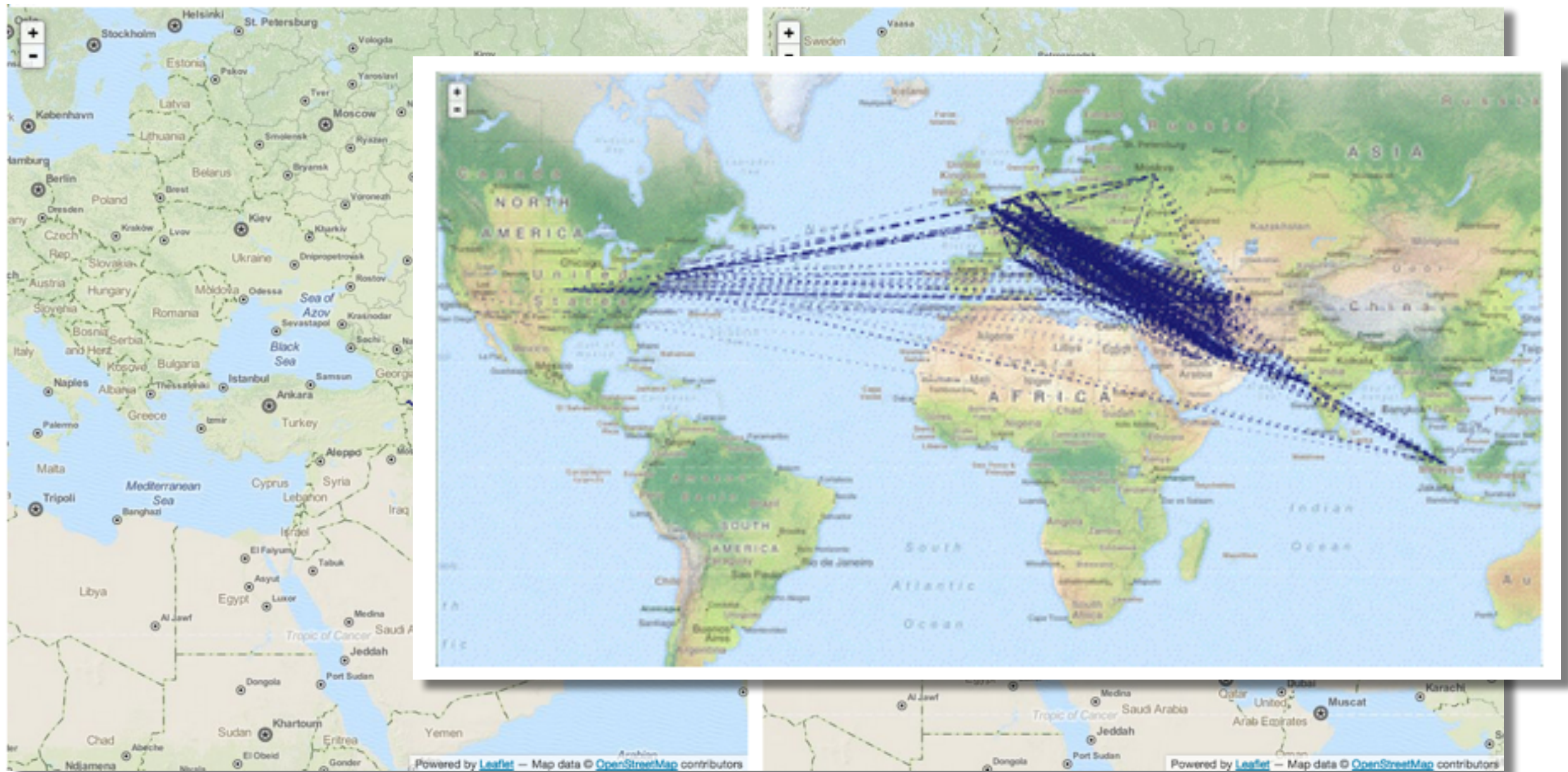
- Querying the REST API
- Creating measurements with the REST API
- Managing and using API keys
- Latest measurement results
- Status checks
- Result streaming
- Built-in Measurements

Source Code & Libraries

- The measurement result parsing library (Sagan)
- Contributed code and various supporting tools
- Raw data structures from measurements
- The probe source code

- Combine with other data
 - Routing (BGP) data
 - Geolocation data
 - Registration (RIR) data
 - etc.
- See RIPEstat for more data:
<https://stat.ripe.net>
https://stat.ripe.net/docs/data_api

- RIPE Atlas data + registration data + geolocation data = measurement of traffic locality



RIPE Atlas probes (connected):

21

vs.

Networks in Armenia (in RIS):

51

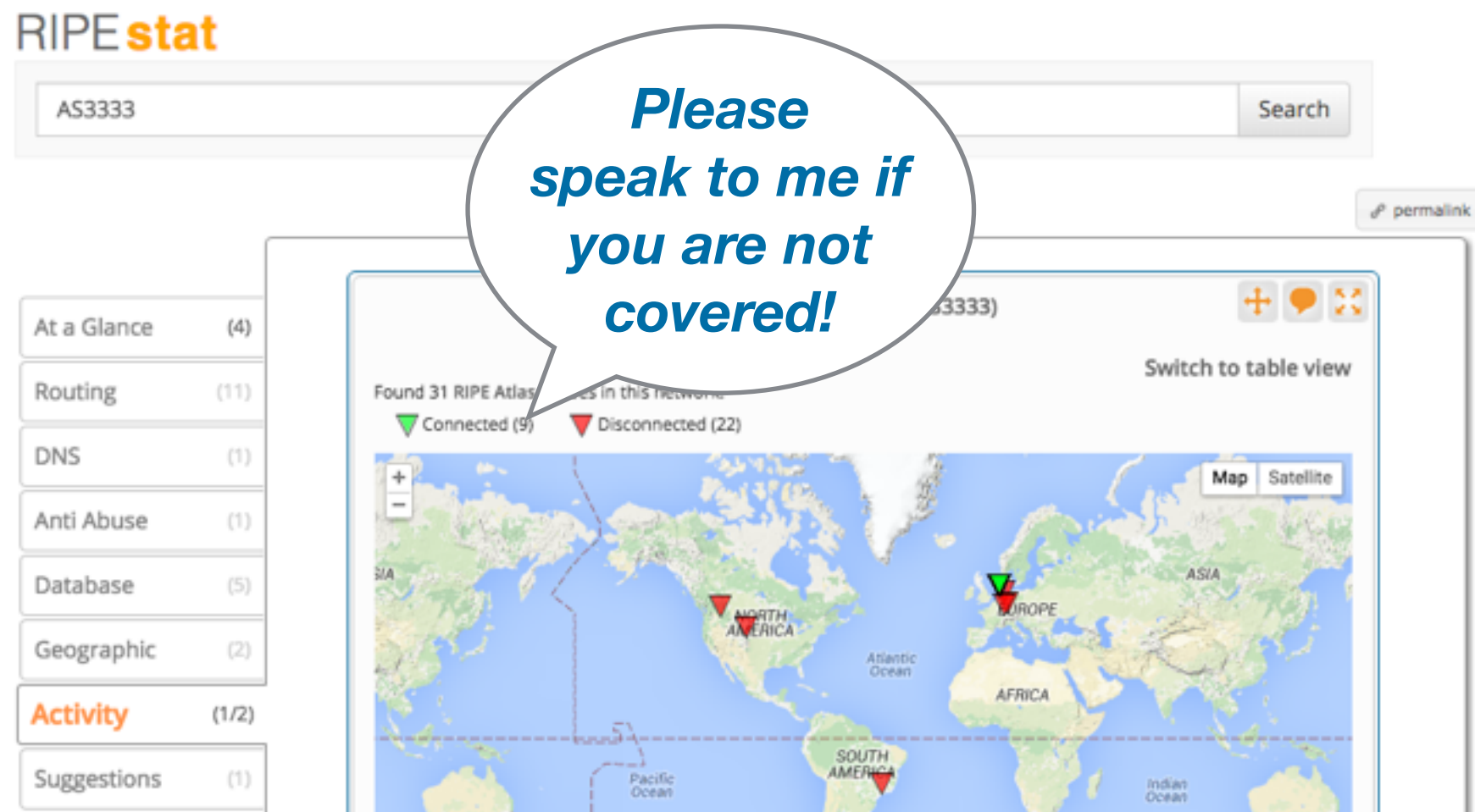


<https://stat.ripe.net/am#tabId=activity>



<https://stat.ripe.net/am#tabId=routing>

- Check whether your network is already covered:
 1. <https://stat.ripe.net>
 2. Enter your network number
 3. Go to “Activity” tab





- <https://atlas.ripe.net>
- Mailing list for active users: ripe-atlas@ripe.net
- Articles and updates: <https://labs.ripe.net/atlas>
- Questions: atlas@ripe.net
- Twitter: [@RIPE_Atlas](https://twitter.com/RIPE_Atlas) and [#RIPEAtlas](https://twitter.com/hashtag/RIPEAtlas)