



**RIPE
NCC**

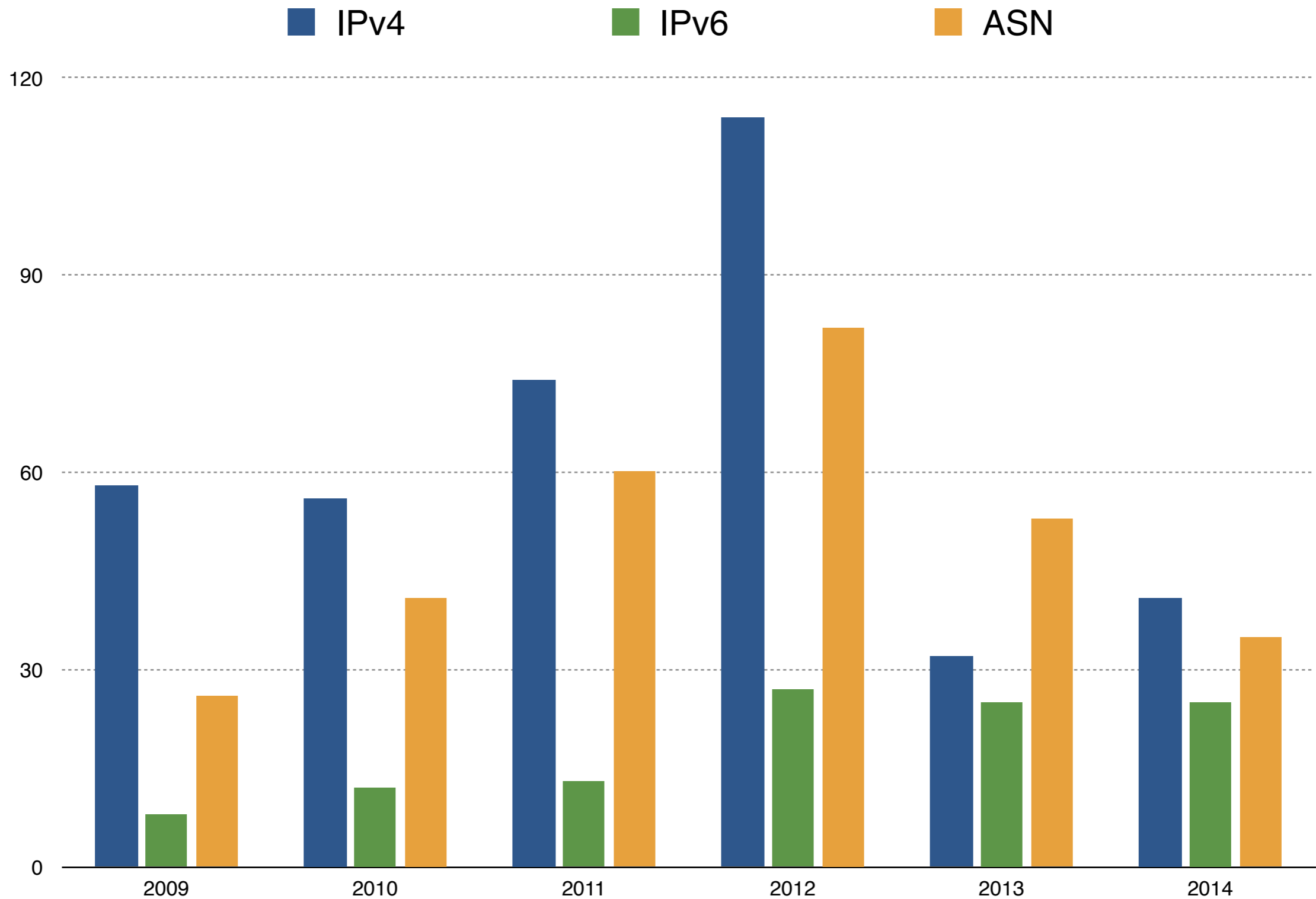
Obtaining and Managing IP Addresses

Saloumeh Ghasemi
IP Resource Analyst

- Getting IPv4 and IPv6 Allocations
- IPv4 Transfers
- Protecting Your Resources
- Policy Development Process

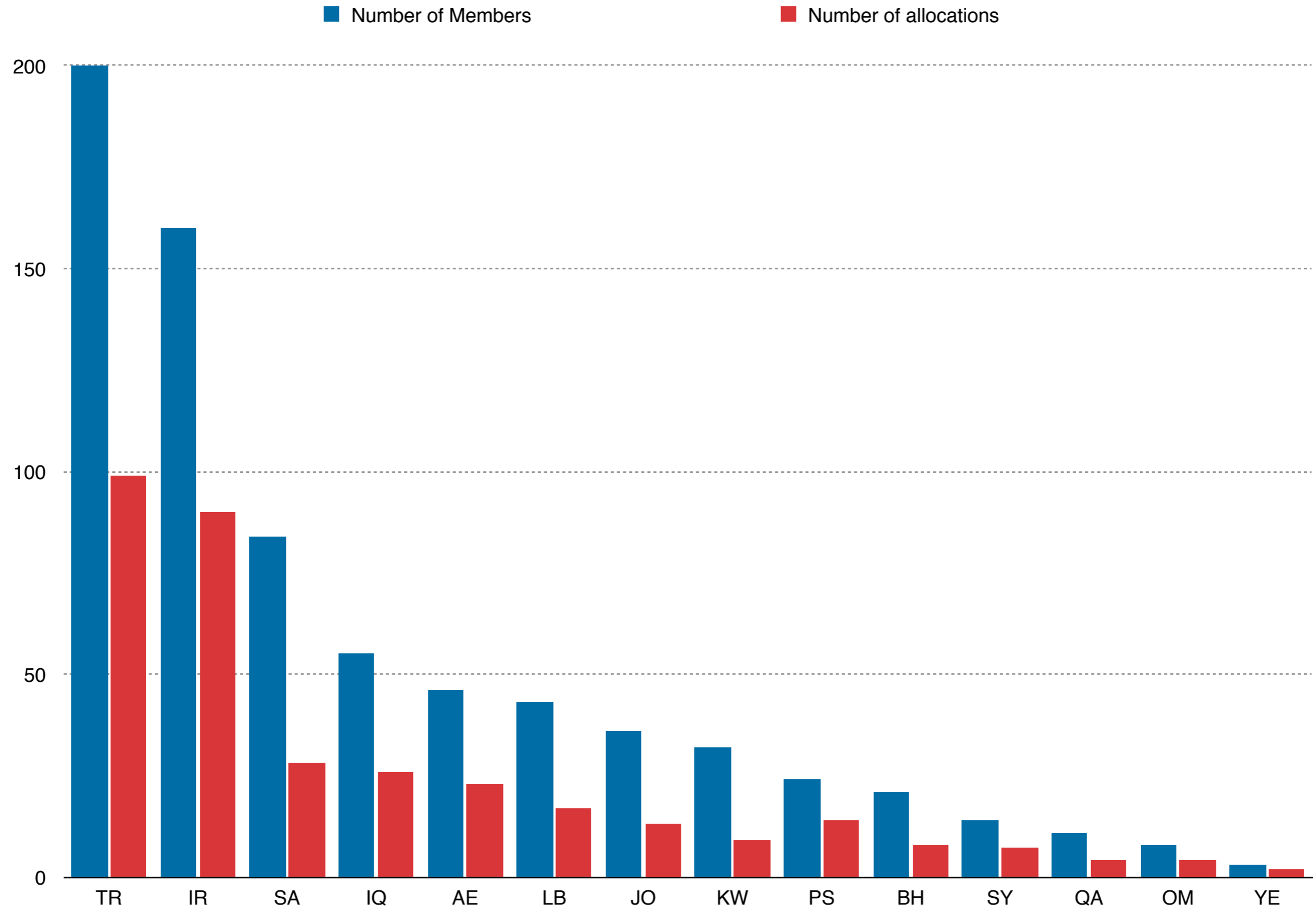
Getting IPv4 and IPv6 Allocations

Number of Resources Issued to Iran



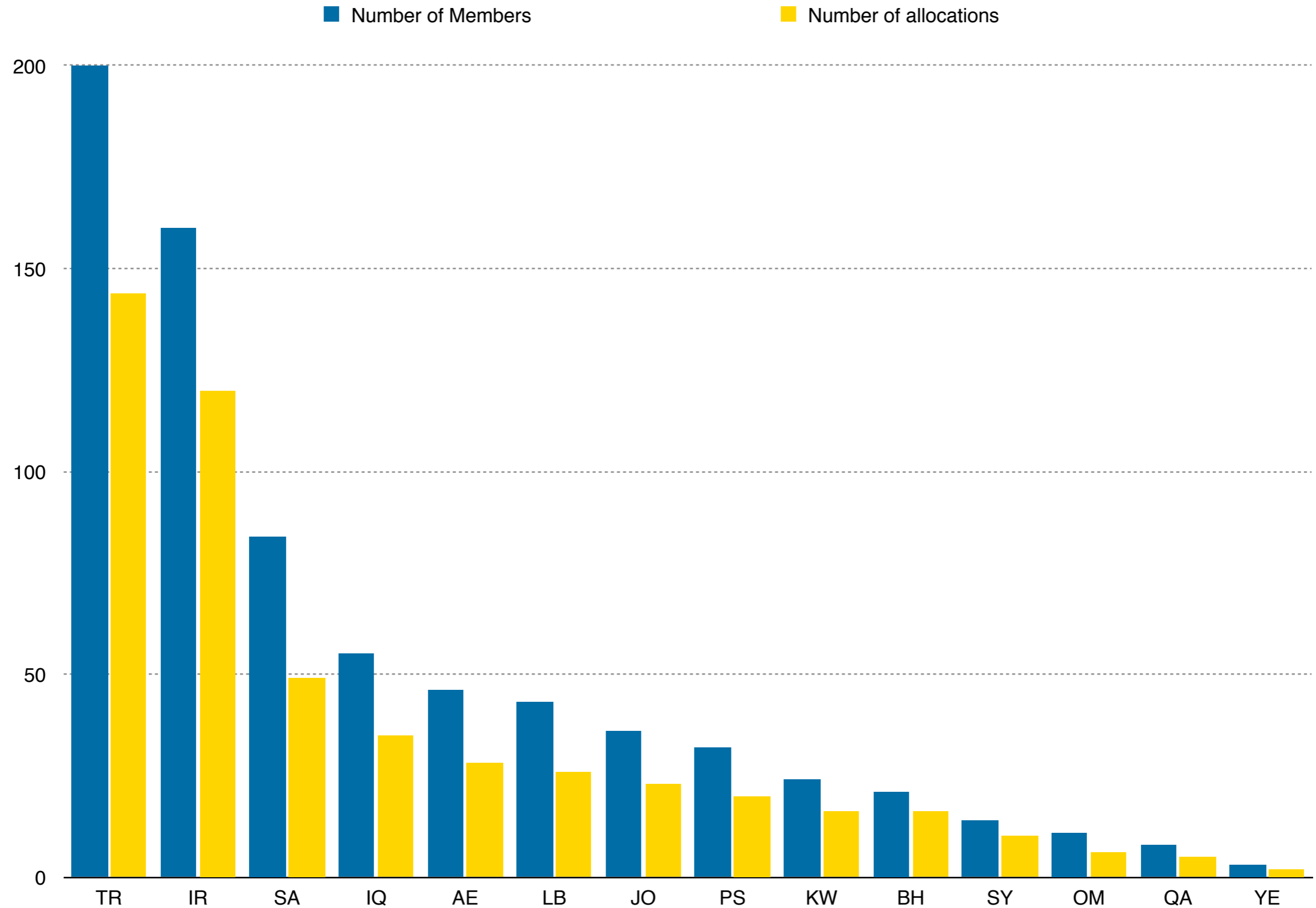
- Under current policy, each member can get one allocation from the remaining pool (final /8)
 - Allocation size: 1,024 addresses (/22)
 - For both new and existing members
 - Must already hold IPv6 allocation or sub-allocation
- A proposal to relax the IPv6 requirement is being discussed in the Address Policy Working Group
 - <http://www.ripe.net/ripe/policies/proposals/2014-04>

IPv4 Final /22 Allocations in the Region



- To qualify for an IPv6 allocation, an organisation must:
 - Be a member of the RIPE NCC
 - Have a plan for making assignments within two years
- The minimum allocation size is a /32
 - Can be extended up to a /29 without additional justification
 - More addresses can be allocated when justified by customer numbers and infrastructure size
- If you are not a member, you can request a Provider Independent (PI) assignment

IPv6 Allocations in the Region



- All request forms are available in the LIR Portal
 - Log in to <http://lirportal.ripe.net> using your RIPE NCC Access account
 - Forms are secure and easy to fill out
 - Email-based request forms will be fully replaced by 30 May 2014
- New APIs are deployed to automate requests
 - In the testing phase
- lir-help@ripe.net is available for all other questions about resource management

- Members' main communication interface with the RIPE NCC
- The LIR Portal lets you manage your resources:
 - View all allocated and assigned IP addresses and ASNs
 - Update assignments
 - Request resources
 - Access IP management tools such as the IP Analyser
- Electronic invoices

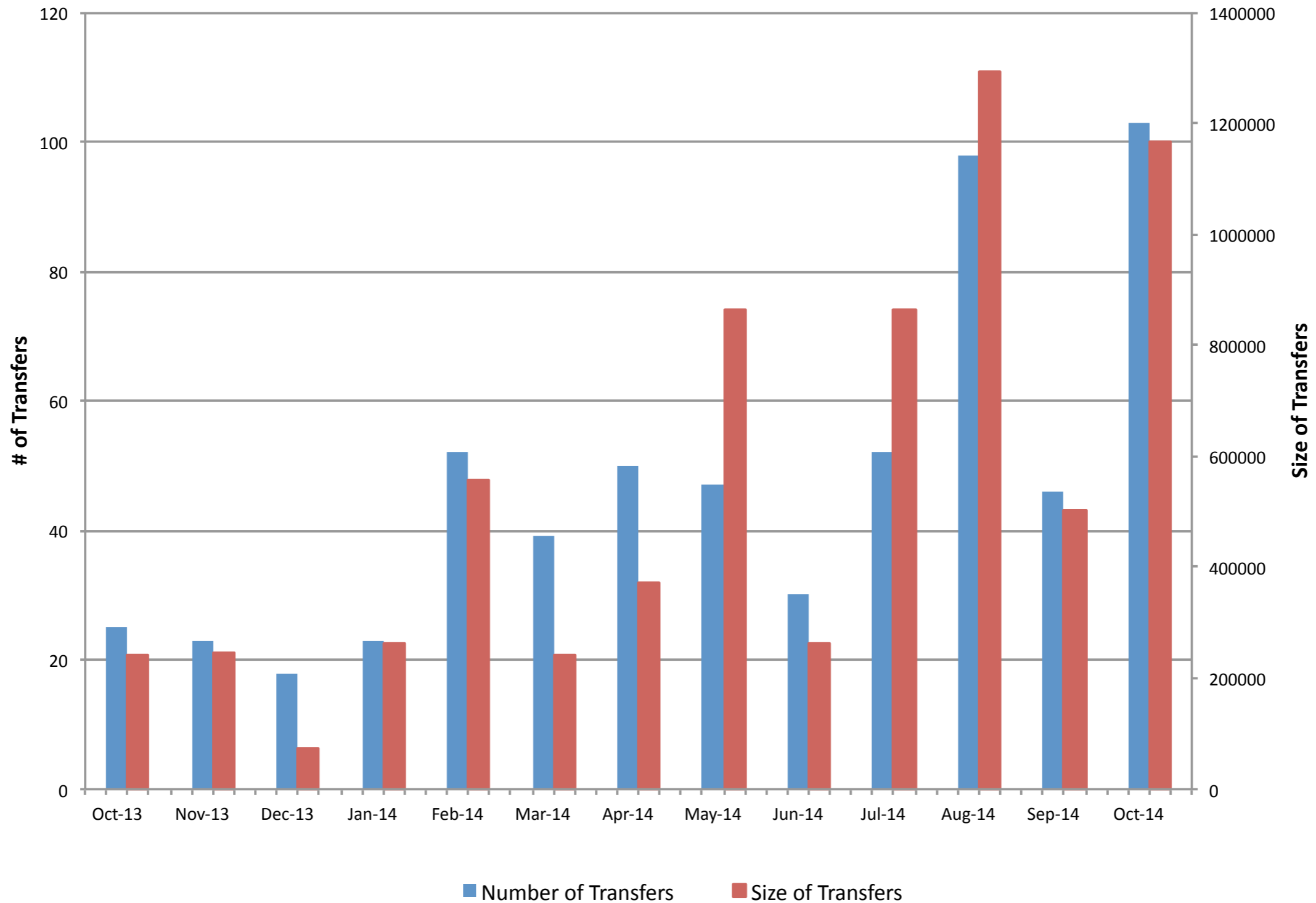
<https://lirportal.ripe.net>

IPv4 Transfers

- IPv4 addresses can be transferred
 - Between members only
 - No minimum allocation size
 - Permanent or temporary transfer
- RIPE NCC will not act as a party in any commercial agreement between members
 - Our task is to keep the RIPE Registry accurate
- The RIPE Database will be updated to show changes
 - Completed transfers are also published on our website

- RIPE NCC IPv4 Transfer Listing Service
 - Accessible via the LIR Portal
 - Can indicate if you have IPv4 addresses available or if you are looking for addresses
 - Facilitates demand and supply
- List of “recognised” brokers on our website
 - Brokers who have signed an agreement to follow RIPE Policies and RIPE NCC procedures

- Send an email to lir-help@ripe.net
- Include the following information and documents:
 - IPv4 allocation(s) being transferred
 - Company names and contact details
 - Whether the transfer is permanent or temporary
 - IPv4 Transfer Agreement
 - Company registration papers of both parties
- More information is available on our website:
<https://www.ripe.net/ipv4transfers>



- There are a number of policy proposals that aim to facilitate IPv4 transfers
- Policy proposal 2014-04 - ‘Allow IPv4 PI transfer’
 - Community reached consensus to allow PI transfers
 - Implementation expected by the beginning of December
- Policy proposal 2014-05 - ‘Inter-RIR transfers’
 - Aims to facilitate the transfer of IPv4 between RIPE NCC and the other RIRs who allow for this
 - Join the discussion in the Address Policy Working Group Mailing List

- Our ultimate priority is keeping the RIPE Registry up-to-date
- We ensure that transfers follow RIPE Policy as decided by the RIPE community
- We support our members through the transfer process
- The RIPE NCC has no interest in financial transactions

Protecting Your Resources

- IPv4 addresses are becoming more valuable
- Criminals use very sophisticated methods to obtain control over (apparently) unused address blocks
 - Faking registration and identity papers
 - Faking entire websites and domains
- The RIPE NCC has to do more thorough checks
 - Unfortunately, it can take more time to process requests
 - Please cooperate in supplying the required documentation
- Hijackers often target blocks with outdated contacts details!

- Make sure to verify your details in the LIR Portal
 - Company address and contact details
 - List of people authorised to make changes
 - RIPE NCC Access accounts that have access
- Verify your entries in the RIPE Database
 - Authentication via **maintainer** passwords
 - Contact details in **maintainer** and other objects
- Process any changes right away
 - Check your information at regular intervals
- In case of questions, contact us!

Policy Development Process

- RIPE Policies evolve over time to accommodate changes in industry and technology
- The community creates policies through open, bottom-up process of discussion and consensus-based decision-making
 - You can take part in this process and join the discussion on the Address Policy Working Group mailing list
 - <http://www.ripe.net/ripe/groups/wg/ap>
- Our Policy Development Officer can help you create a new proposal. Email pdo@ripe.net

