



RIPE
NCC

Obtaining and Managing IP Addresses

Xavier Le Bris

IP Resource Analyst - Trainer

- Getting IPv4 and IPv6
- IPv4 Transfers
- Protecting Your Resources
- The RIPE Policy Development Process (PDP)

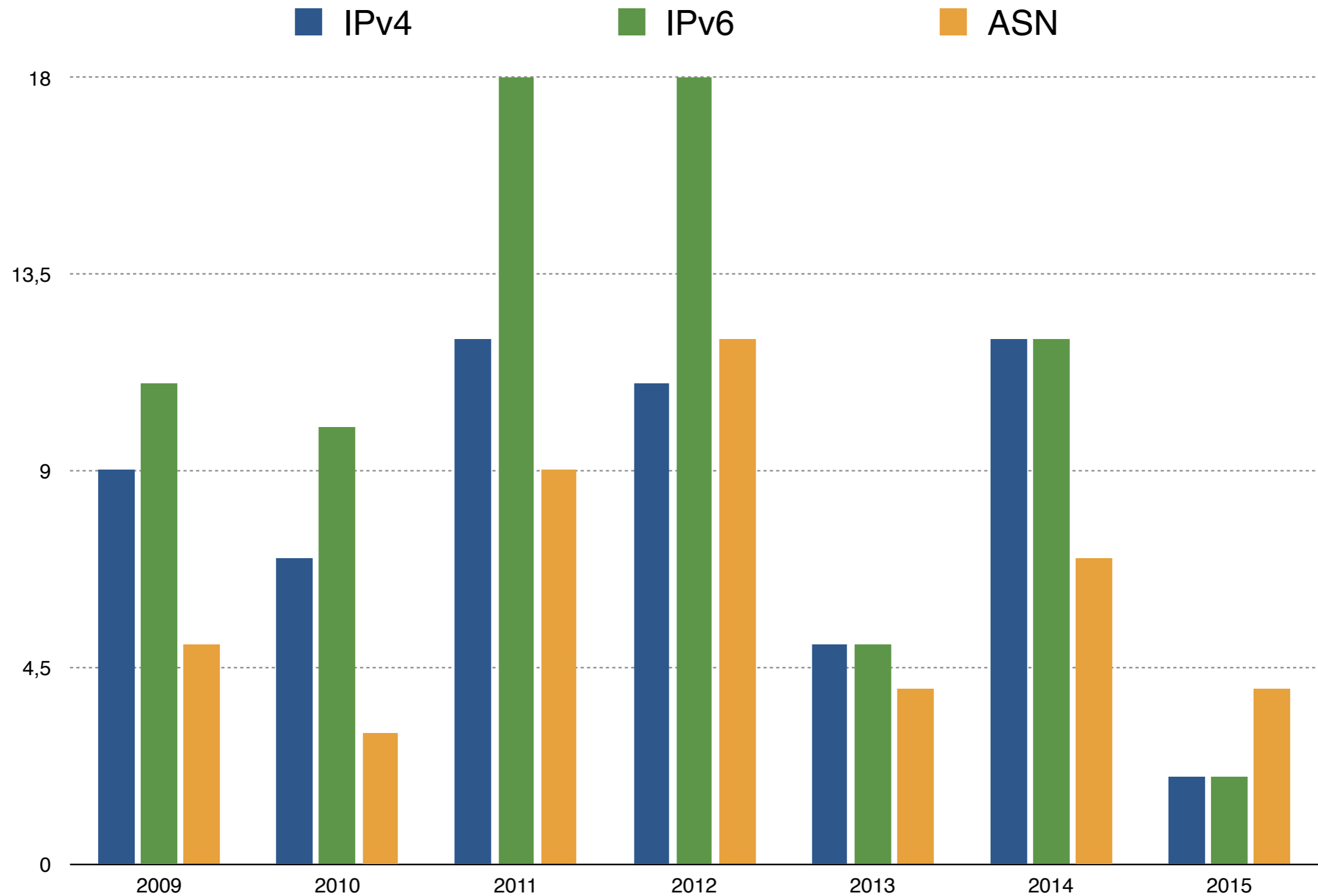


Getting IPv4 and IPv6



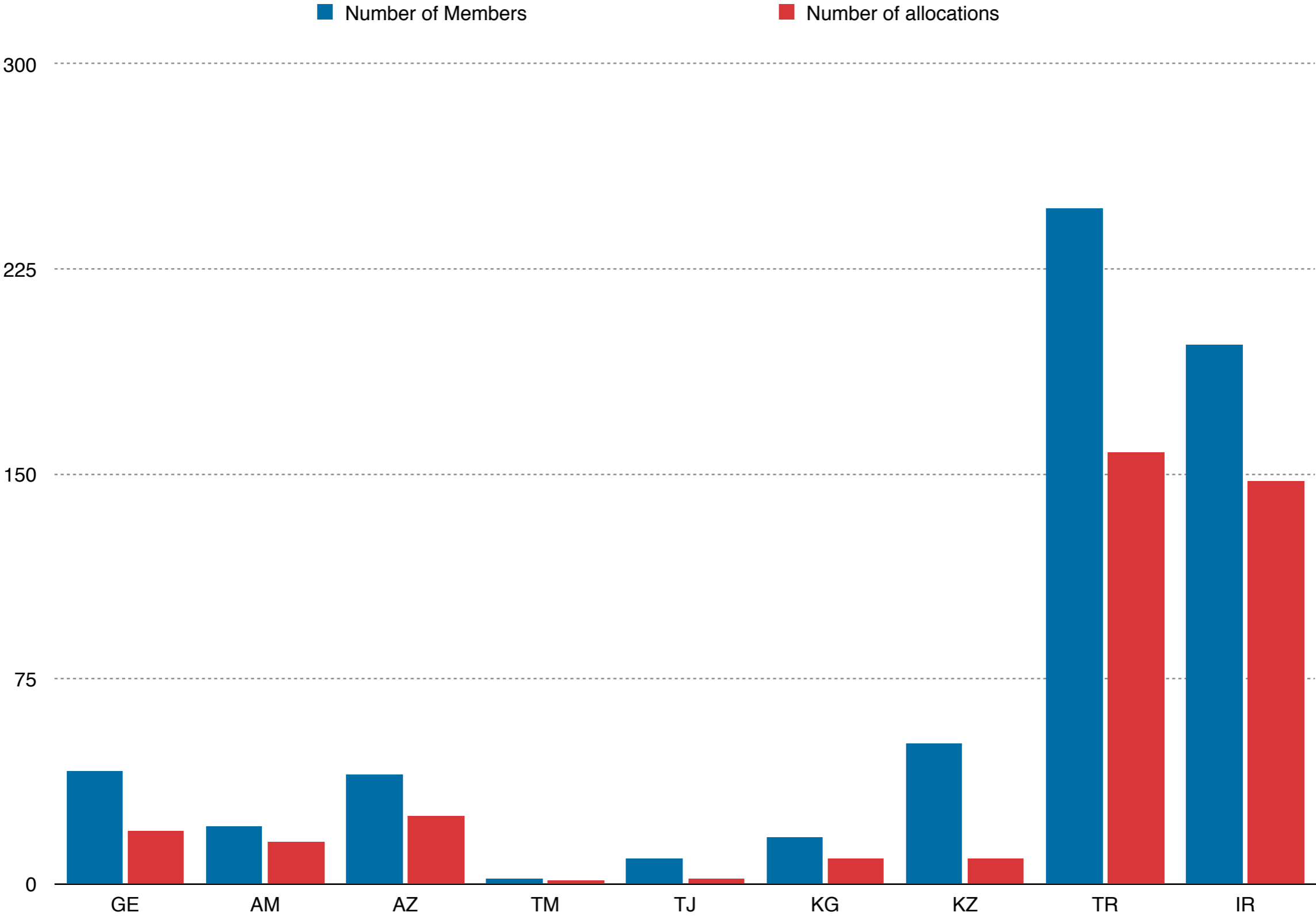
RIPE
NCC

Internet Resources Issued to Georgia



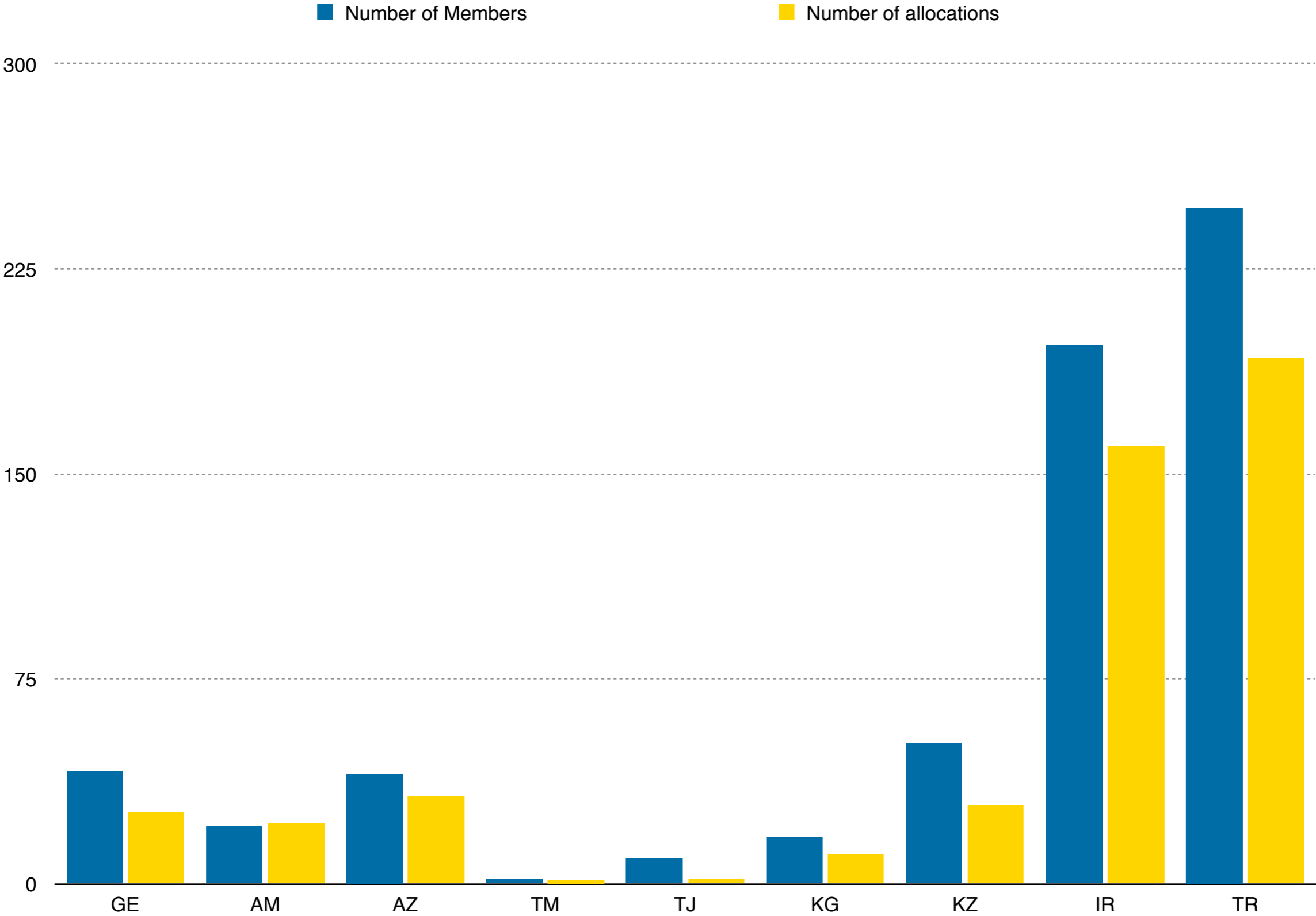
- Under current policy, each member can get one allocation from the remaining pool (the last /8)
 - Allocation size: 1,024 addresses (/22)
 - For both new and existing members

IPv4 /22 Allocations in the Region



- To qualify for an IPv6 allocation, an organisation must:
 - Be a member of the RIPE NCC
 - Have a plan for making assignments within two years
- The minimum allocation size is a /32
 - Can be extended up to a /29 without additional justification
 - More addresses can be allocated when justified by customer numbers and infrastructure size
 - New policy proposal on assessment criteria for IPv6 initial allocation size is being discussed
- If you are not a member, you can request a Provider Independent (PI) assignment

IPv6 Allocations in the Region



- All request forms are available in the LIR Portal
 - Log in to <http://lirportal.ripe.net> using your RIPE NCC Access account
 - Forms are secure and easy to fill out
 - Email-based request forms will be fully phased out by 30 May 2015
 - New APIs have been deployed to automate requests and are in the testing phase
- lir-help@ripe.net is available for all other questions about resource management

- Members' main communication interface with the RIPE NCC
- Helps you to manage your resources:
 - View all allocated and assigned IP addresses and ASNs
 - Update assignments
 - Request resources
 - Access IP management tools such as the IP Analyser
- Electronic invoices

<https://lirportal.ripe.net>



IPv4 Transfers



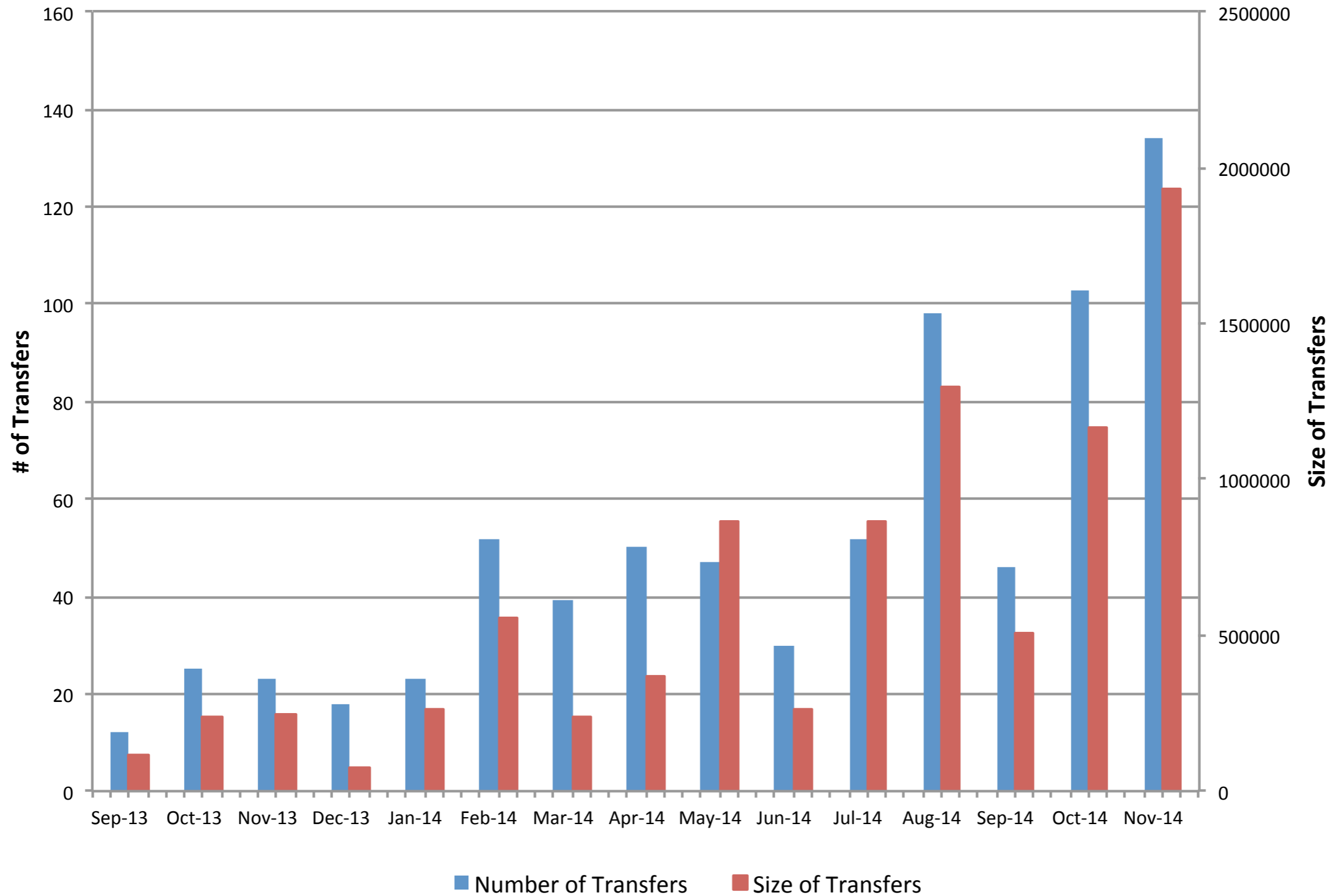
RIPE
NCC

- IPv4 addresses can be transferred
 - Between members only
 - No minimum allocation size
 - Permanent or temporary transfer
- The RIPE NCC is not involved in any commercial agreement between members
 - Our task is to keep the RIPE Registry accurate
- The RIPE Database will be updated to show changes
 - Completed transfers are also published on our website

- IPv4 Transfer Listing Service
 - Accessible via the LIR Portal
 - Can indicate whether you have IPv4 addresses available or if you are looking for addresses
 - Facilitates demand and supply
- List of “recognised” brokers on our website
 - Brokers who have signed an agreement to follow RIPE Policies and RIPE NCC procedures

- Send an email to lir-help@ripe.net
- Include the following information and documents:
 - IPv4 allocation(s) being transferred
 - Company names and contact details
 - Whether the transfer is permanent or temporary
 - IPv4 Transfer Agreement
 - Company registration papers of both parties
- More information is available on our website:
<https://www.ripe.net/ipv4transfers>

Completed IPv4 Transfers



- There are a number of recent policy proposals that facilitate transfers
- Current policy proposal 2015-01, “Alignment of Transfer Requirements for IPv4 Allocations”
- Implementing Policy for inter-RIR transfers
 - Aims to facilitate the transfer of Internet number resources between the RIPE NCC and other RIR service regions

- Policy Proposal 2014-12 “Allow IPv6 Transfers”
 - IPv6 Allocations and IPv6 PI Assignments
- Policy Proposal 2014-13 “Allow AS Number Transfers”
- Will announce when implementation is completed in July

- Our ultimate priority is keeping the RIPE Registry up-to-date
- We ensure that transfers follow RIPE Policy as decided by the community
- We support our members through the transfer process
- The RIPE NCC has no interest in financial transactions



Protecting Your Resources



RIPE
NCC

- IPv4 addresses are becoming valuable
- Criminals use sophisticated methods to obtain control over (apparently) unused address blocks
 - Faking registration and identity papers
 - Faking entire websites and domains
- We have to do more thorough checks
 - Unfortunately, it can take more time to process requests
 - Please cooperate in supplying the required documentation
- Hijackers often target blocks with outdated contacts details!

- Make sure to verify your details in the LIR Portal
 - Company address and contact details
 - List of people authorised to make changes
 - RIPE NCC Access accounts that have access
- Verify your entries in the RIPE Database
 - Authentication via **maintainer** passwords
 - Contact details in **maintainer** and other objects
- Process any changes right away
 - Check your information at regular intervals
- In case of questions, contact us!



The RIPE Policy Development Process (PDP)



RIPE
NCC

- RIPE Policies evolve over time to accommodate changes in industry and technology
- The community creates policies through open, bottom-up process of discussion and consensus-based decision-making
 - You can take part in this process and join the discussion on the Address Policy Working Group mailing list
 - <http://www.ripe.net/ripe/groups/wg/ap>
- Our Policy Development Officer can help you create a new proposal: pdo@ripe.net

