

nominet

ccTLD use of DNSMON

RIPE56, 8 May 2008



ccTLD use of DNSMON
What and Why

nominet



What is recorded

- Planned downtime
- Unplanned downtime
- Single metric

Downtime Thresholds

What is allowed

- 60 mins unplanned
- 120 mins total
- 0 mins for whole constellation
- This is our 100% performance

Performance Calculation

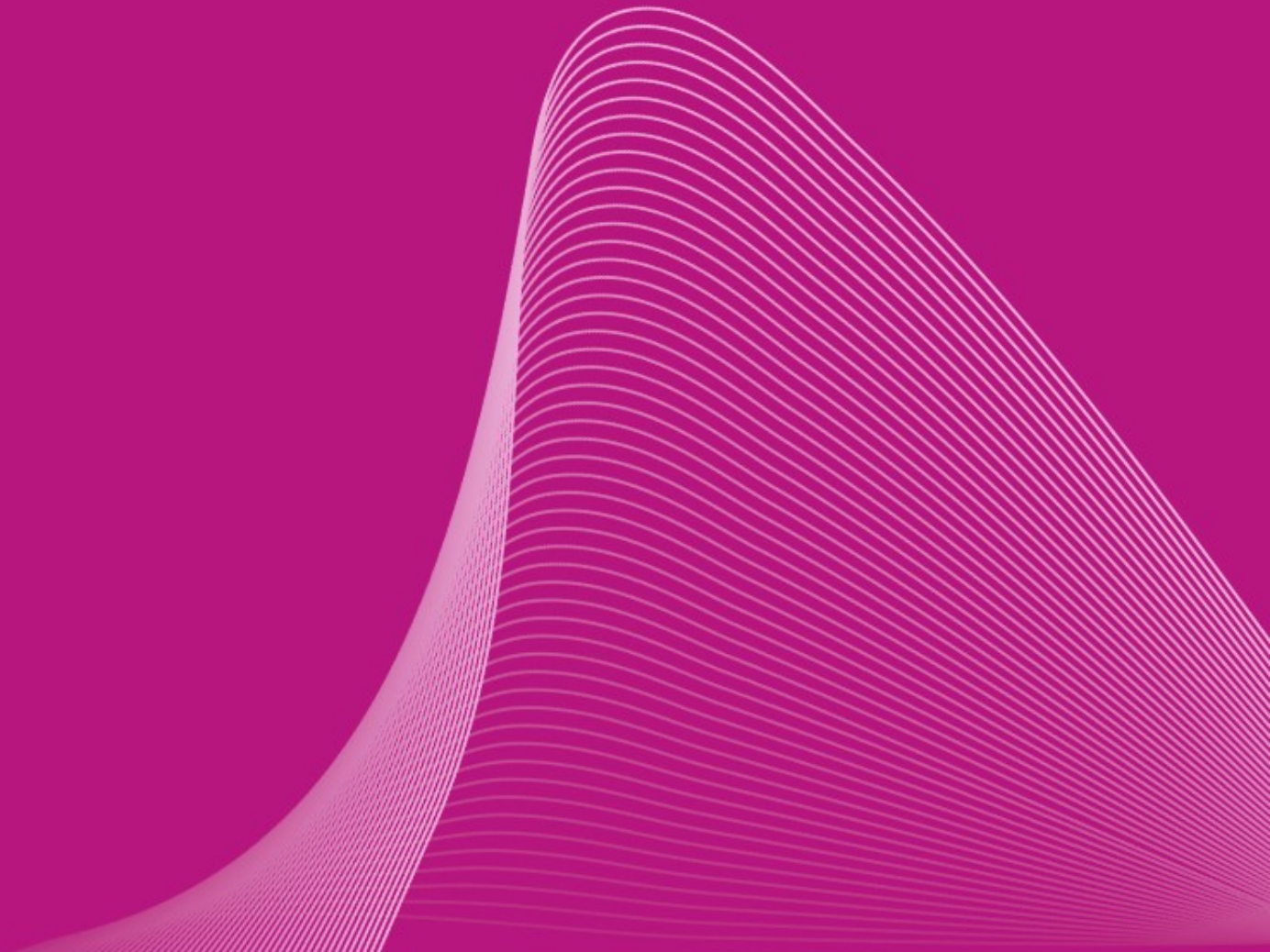
How we express performance

- T_m = total minutes in month
- T_p = actual planned
- T_u = actual unplanned
- T_a = T_m - (total allowed downtime)
- Performance = $(T_m - T_p - T_u) / T_a * 100$

ccTLD use of DNSMON

How now

nominet



How now

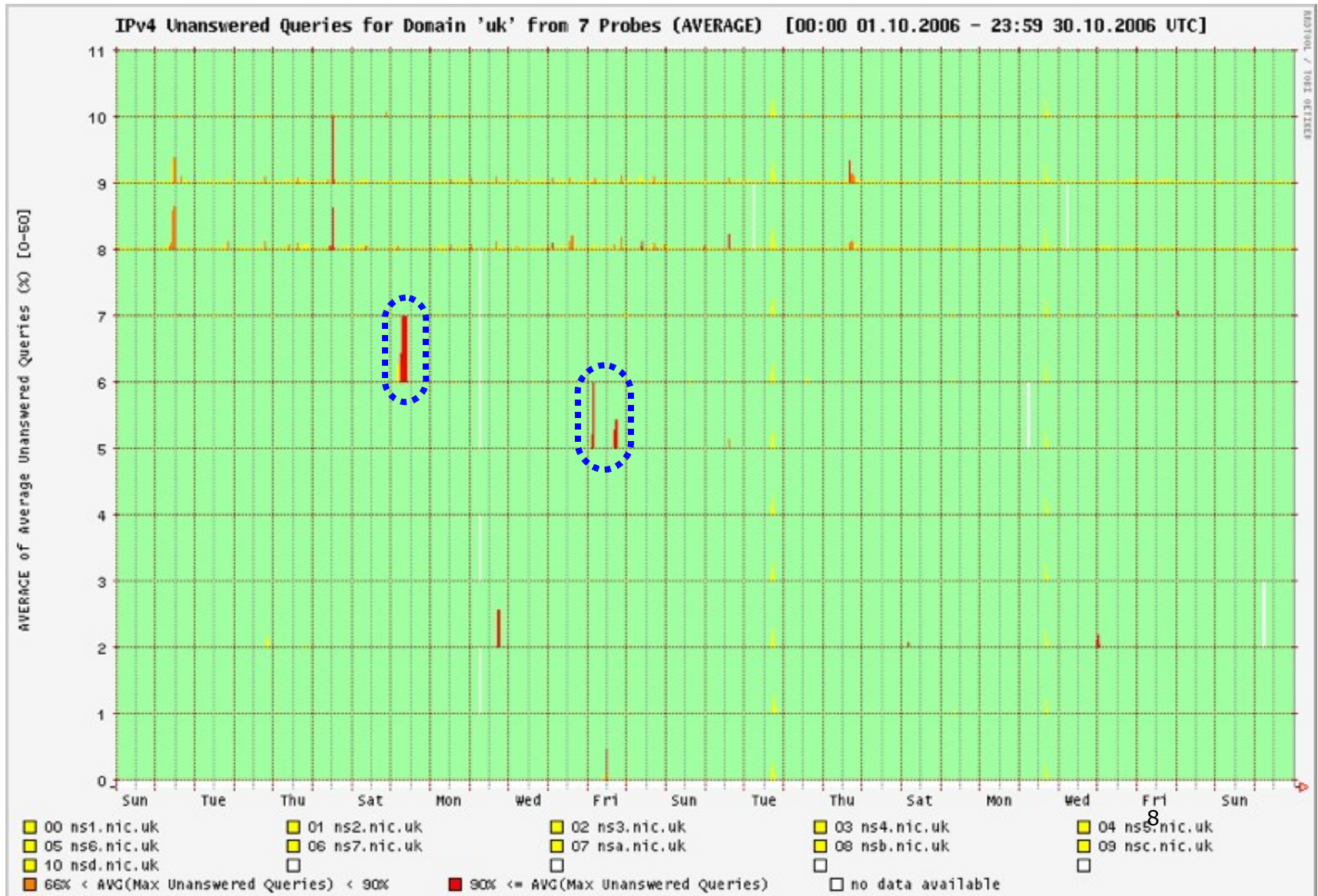
nominet

Monitoring

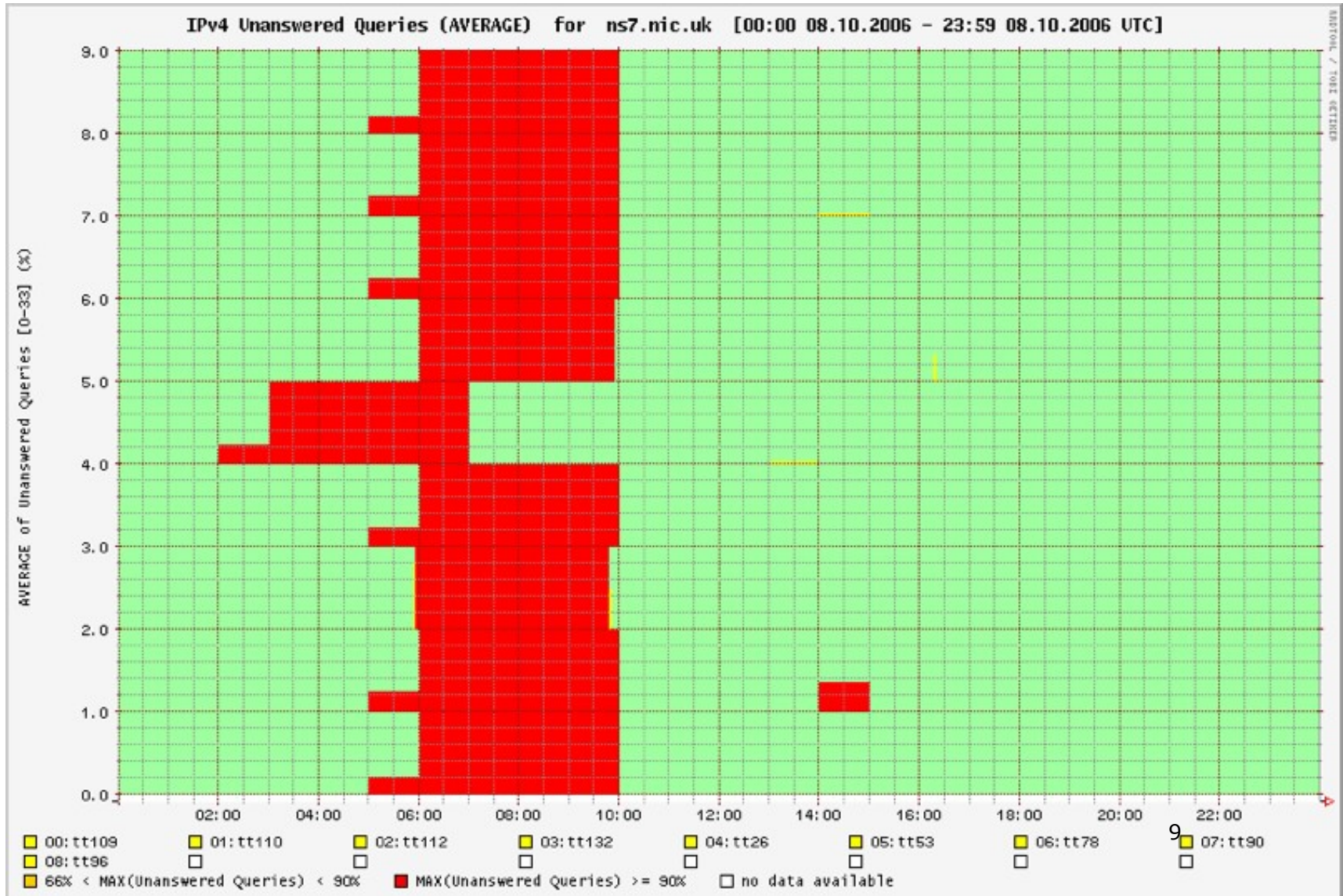
Methods used

- Nagios
- Manual recording
- DNSMON

DNSMON Example 1



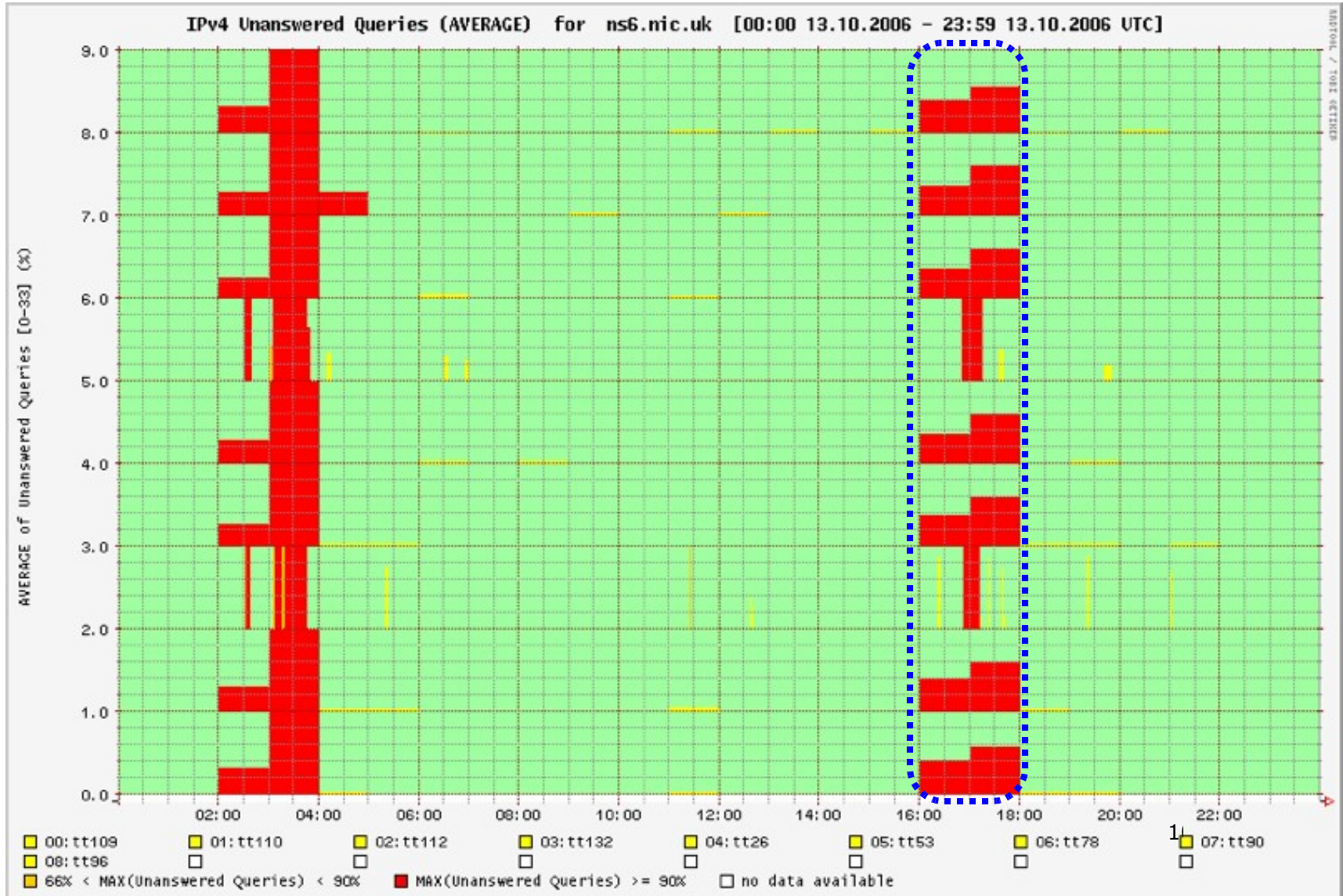
DNSMON Example 2



How now

nominet

DNSMON Example 3



ccTLD use of DNSMON

Future plans

nominet

Future plans

nominet

Automation

- Raw DNSMON data
- Global view
- Rapid notification/response

ccTLD use of DNSMON

Questions?

nominet

