



K-Root Name Server Operations

Andrei Robachevsky

andrei@ripe.net



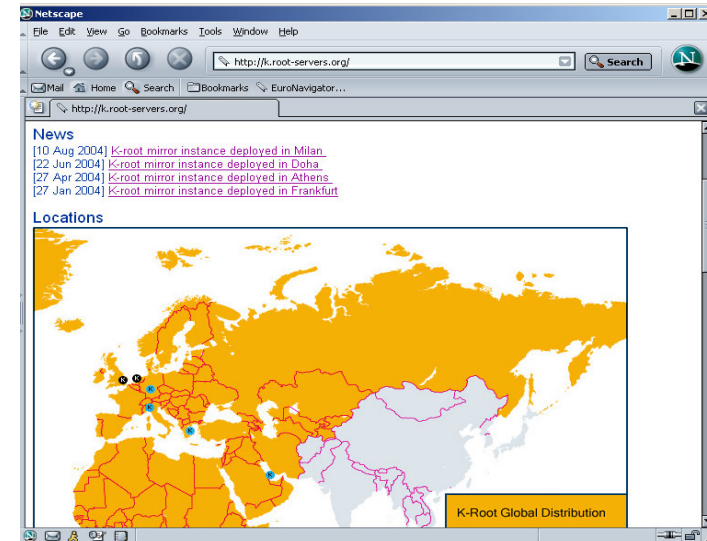
K-root Milestones

- Operated by RIPE NCC since May 1997
 - Hosted by LINX in London
- Running NSD since February 2003
 - Increased software diversity and performance
- Anycast since July 2003
 - Two global instances: London and Amsterdam
- Wider anycast deployment (2004)
 - Local nodes (deployment)
 - Nodes outside the RIPE NCC region (investigation)



Current Status

- 2 global instances
 - London and Amsterdam
- Available via IPv6 @ 2001:7fd::1
 - Global instance in Amsterdam
- Four “local” nodes are deployed
 - Objective is to improve service for local ISP communities in the RIPE NCC region
 - Latest developments: Qatar (Doha) and Italy (Milan)



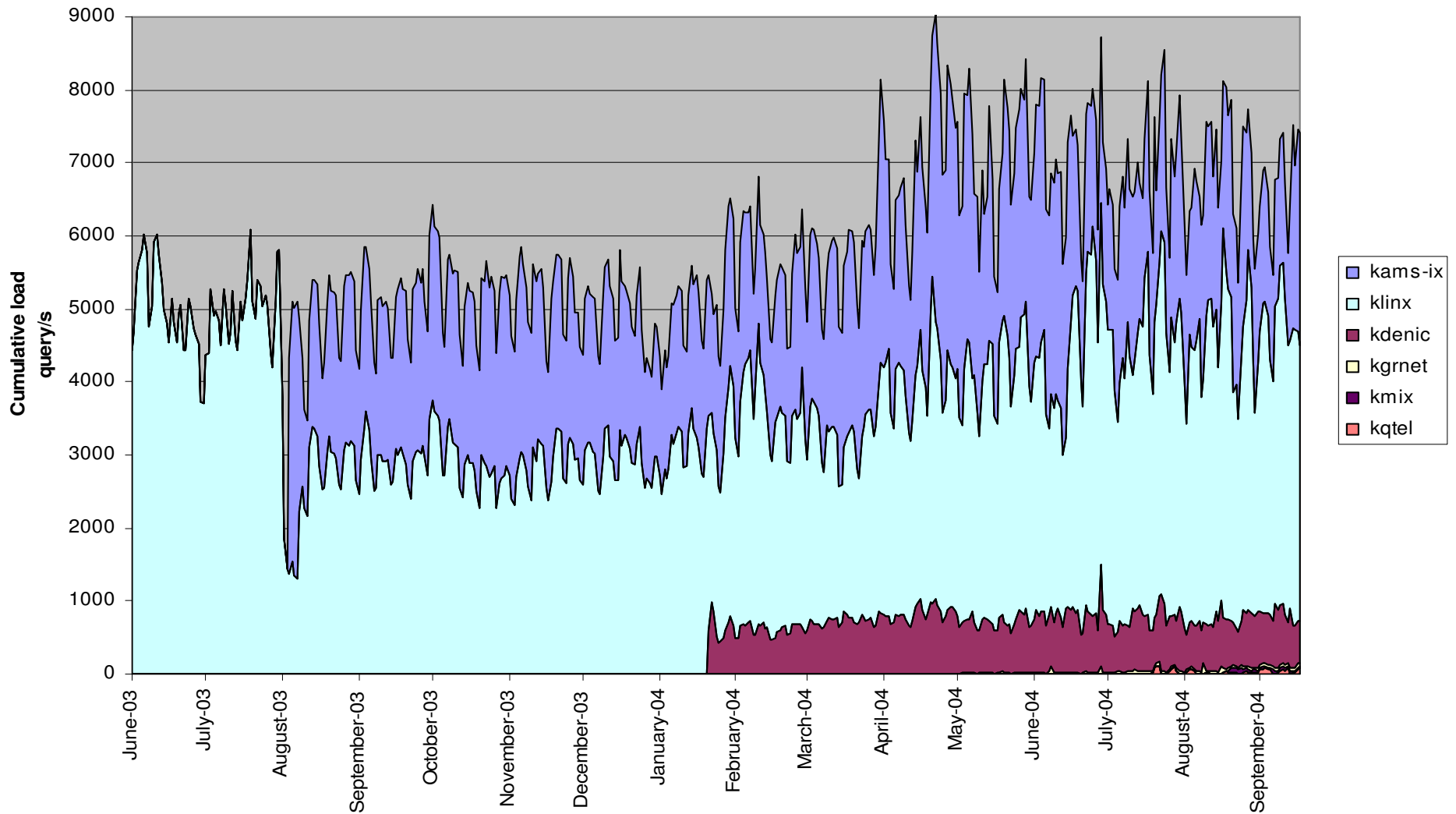


Future Plans

- Deployment of local nodes
 - Iceland, Finland, Hungary, Poland, Russia, Switzerland, UAE
- Nodes outside the RIPE NCC region
 - Objective is to improve global service resilience
 - Ideally located at topologically equidistant places
 - The same management model as for local nodes
 - Different funding model
 - Looking for 3-5 locations in Asia and the Americas
 - AP in cooperation with APNIC



K-root Statistics (Cumulative Load)



More Information

- Root operators
 - <http://www.root-servers.org>
 - [http://\[a-m\].root-servers.org](http://[a-m].root-servers.org)
 - <http://dnsmon.ripe.net>
- Root server analysis
 - <http://www.caida.org/projects/dns-analysis/>
- Anycasting
 - [Host Anycasting Service, RFC1546, http://www.ietf.org/rfc/rfc1546.txt](http://www.ietf.org/rfc/rfc1546.txt)
 - [Distributing Authoritative Name Servers via Shared Unicast Addresses. RFC3258, http://www.ietf.org/rfc/rfc3258.txt](http://www.ietf.org/rfc/rfc3258.txt)



More Information (cont.)

- K-root
 - <http://k.root-servers.org>
- K-root anycasting
 - Distributing K-Root Service by Anycast Routing of 193.0.14.129, RIPE- 268,
<http://www.ripe.net/ripe/docs/ripe-268.html>
 - General Requirements and Guidelines,
<http://k.root-servers.org/hosting-guidelines-200311.html>
 - Contact at k-anycast@ripe.net



<http://www.ripe.net/presentations>