

Building an IXP

RIPE NCC Regional Meeting, Dubrovnik, Croatia

8th September 2011

Agenda

- Before you buy a switch
- After installation, before customers
- Turn up customers!

**Before you
buy a switch**



Planning

Community



Legal Structure



Legal Entity

Commercial



Peering LA

**Closed Use
Groups?**

**Interlink over
network?**

Number Resources

are here: [Home](#) > [LIR Services](#) > [Resource Management](#)

Resource Management

Information to help RIPE NCC Members (LIRs) and Direct Assignment users manage Internet number resources.

IPv4 Exhaustion

With the remaining IPv4 address pool held by the Internet Assigned Numbers Authority (IANA) exhausted, what happens now?

[Read More](#)



Can I split up assignments? How and when do I request an allocation? How do I request an AS Number?

Quick Links

[Request Forms & Supporting Notes](#)

[IPv4 Evaluation Procedures](#)

[IPv4](#)

[IPv6](#)

[Certification](#)

[Reverse DNS](#)

[Resource Quality](#)

[Contact Registration Services](#)

End User Contr

No PI from last

umbo Frames



Spanning Tree

MRP

Layer 2 Resilience Protocols

EAPS

VP

Trill

Port Security

A large metal padlock is locked onto a green metal pipe, symbolizing security. The padlock is silver and has a circular dial on its body. The pipe is green and shows some signs of wear and rust. The background is a solid green color.

'n' MACs per port

Storm Prevention

Leaky ISP Layer 2

Other Switch Features



Cloud Migration

Independence

Support

Reduced Costs

Collector
(BGP Router)

Debug

Monitor

Support

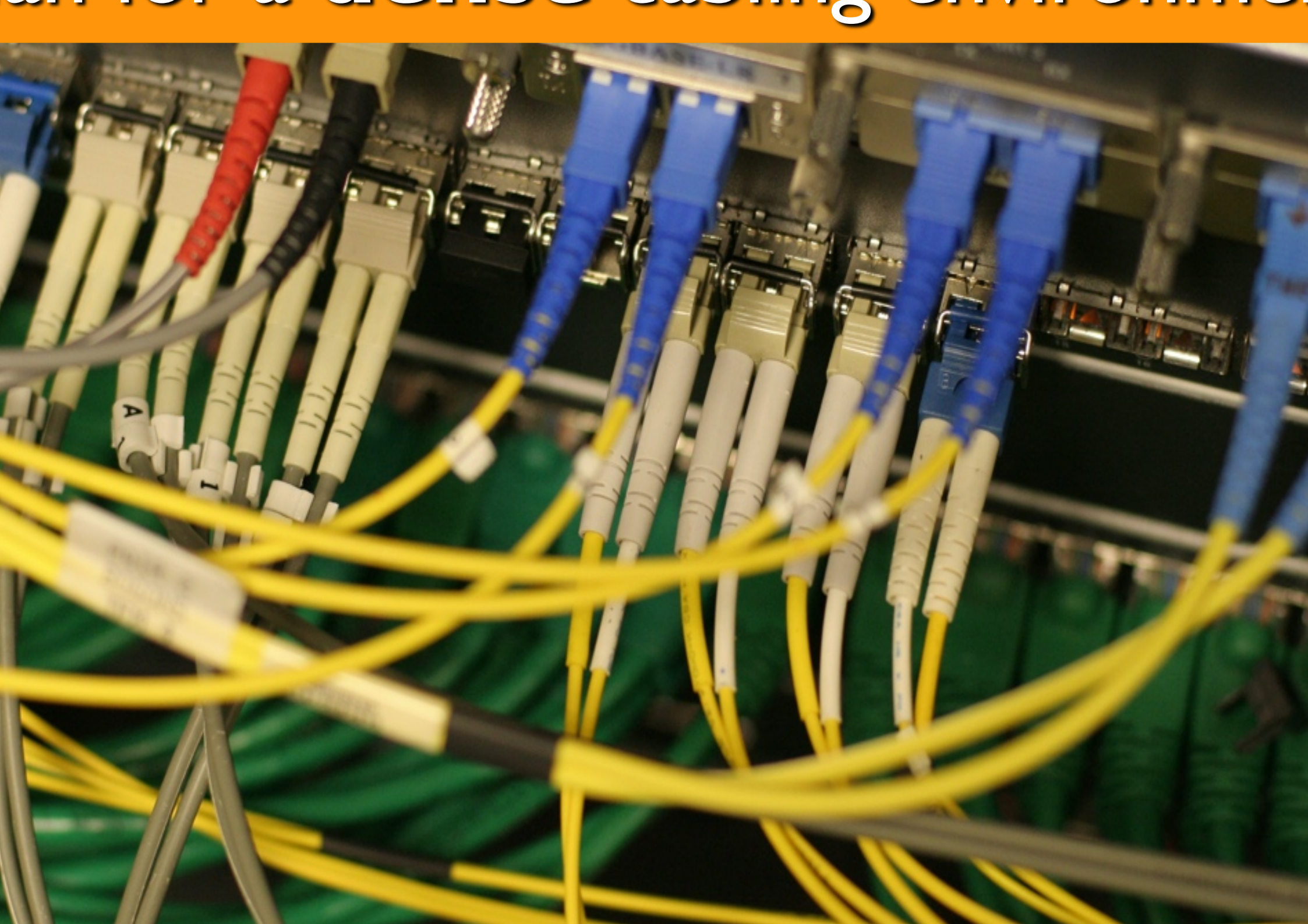
**After
installation**

Monitoring

Availability

Performance

Ethernet OAM



SFlow

Customers

Top Peers

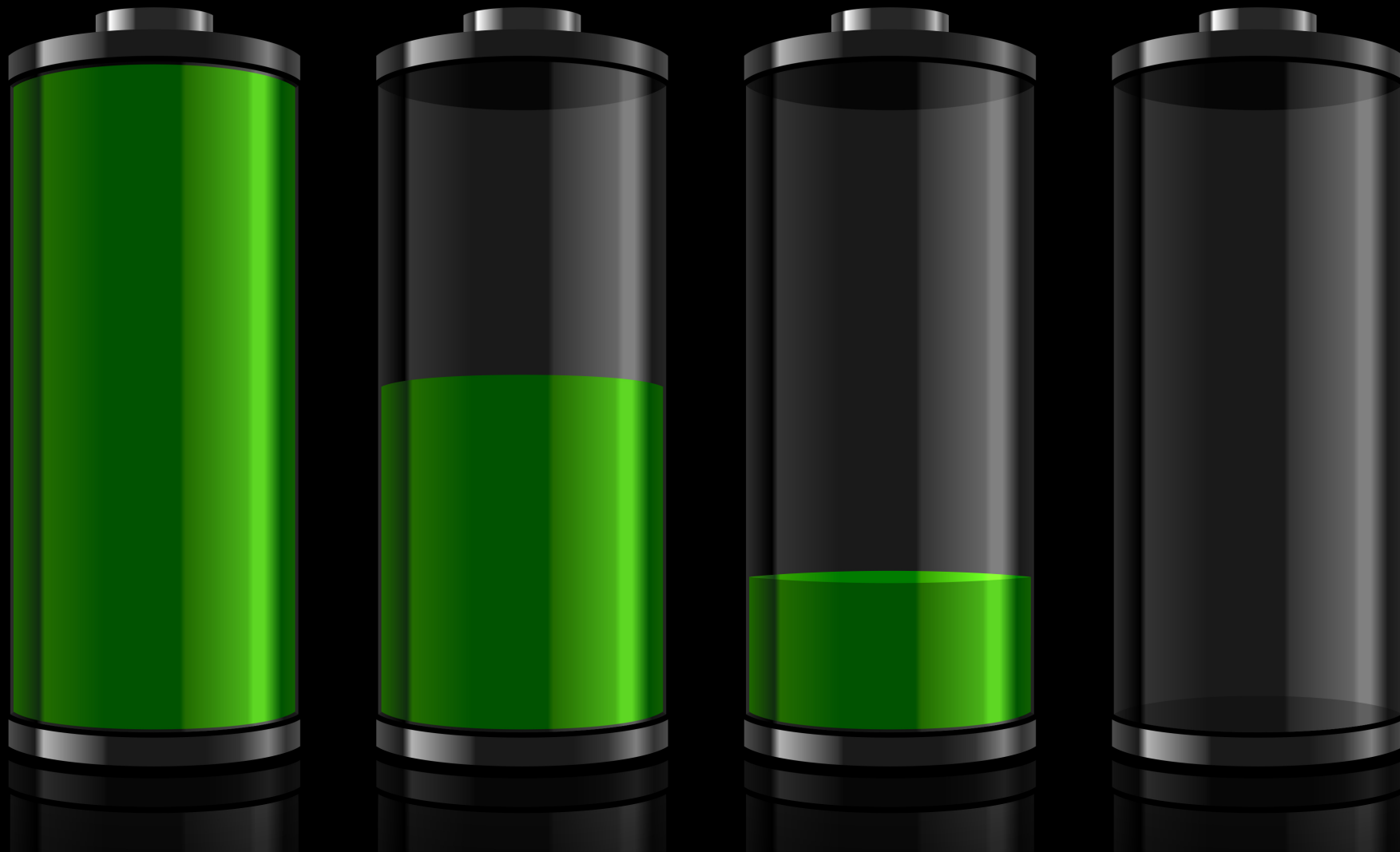
Exchange

Marketing

Resilience

Missed Ops

Service Levels



Cost to Exchange func

Communications



Tech Support

Organisation

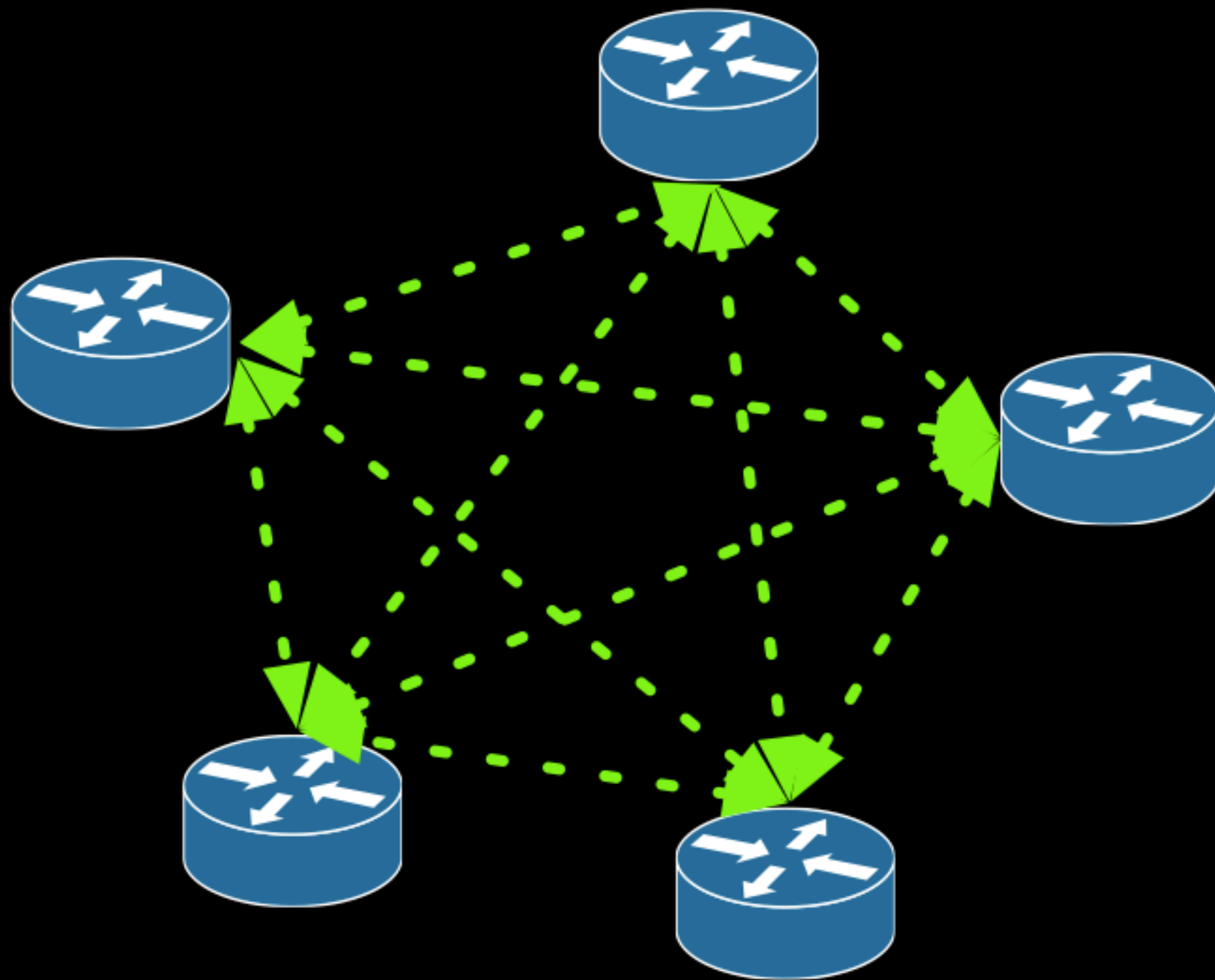
Route Servers



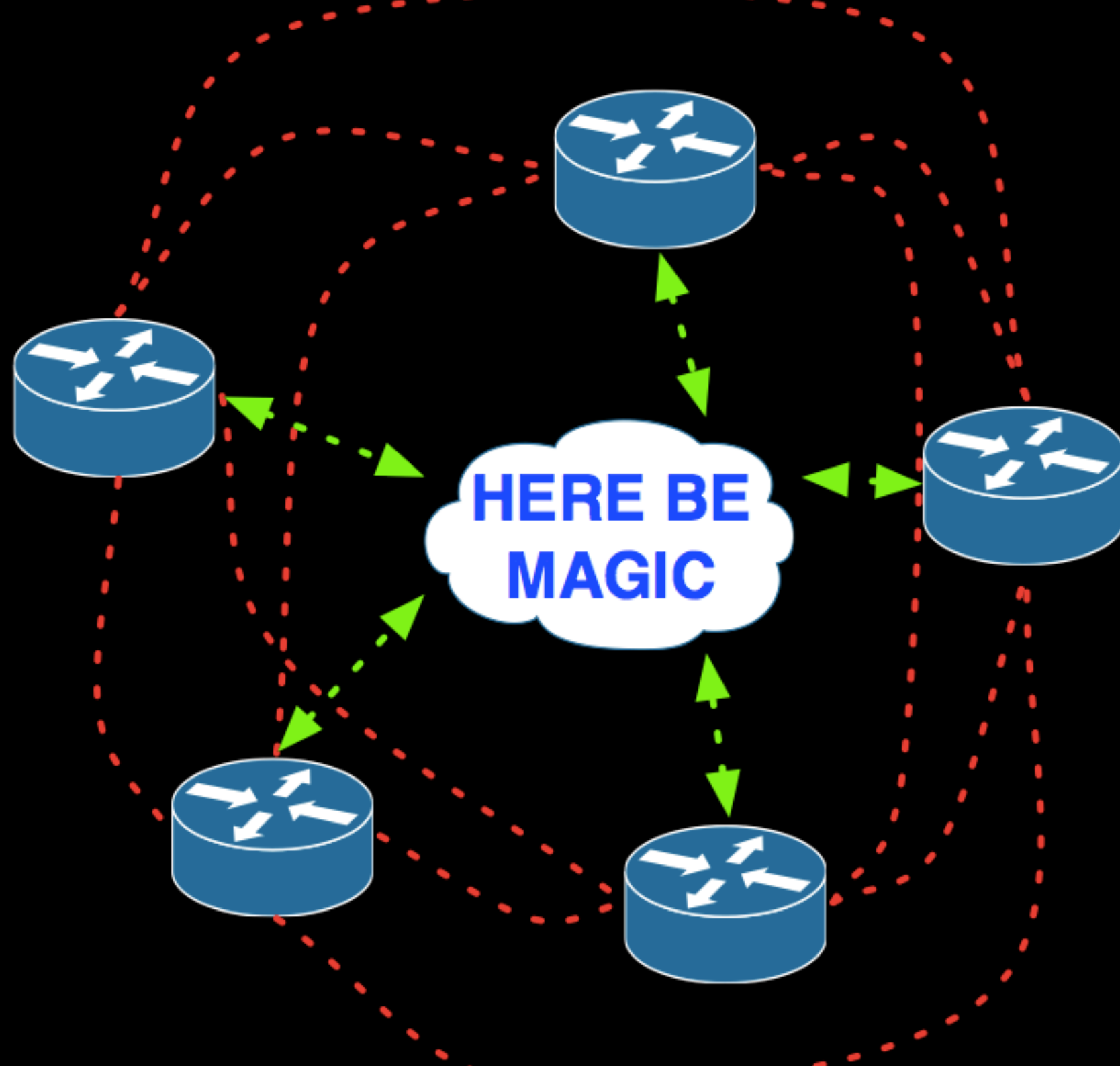
1 Session, Many Peers

Make it reliable

Make it optional



bgp



bgp

traffic



**Turn up
customers!**

Announce

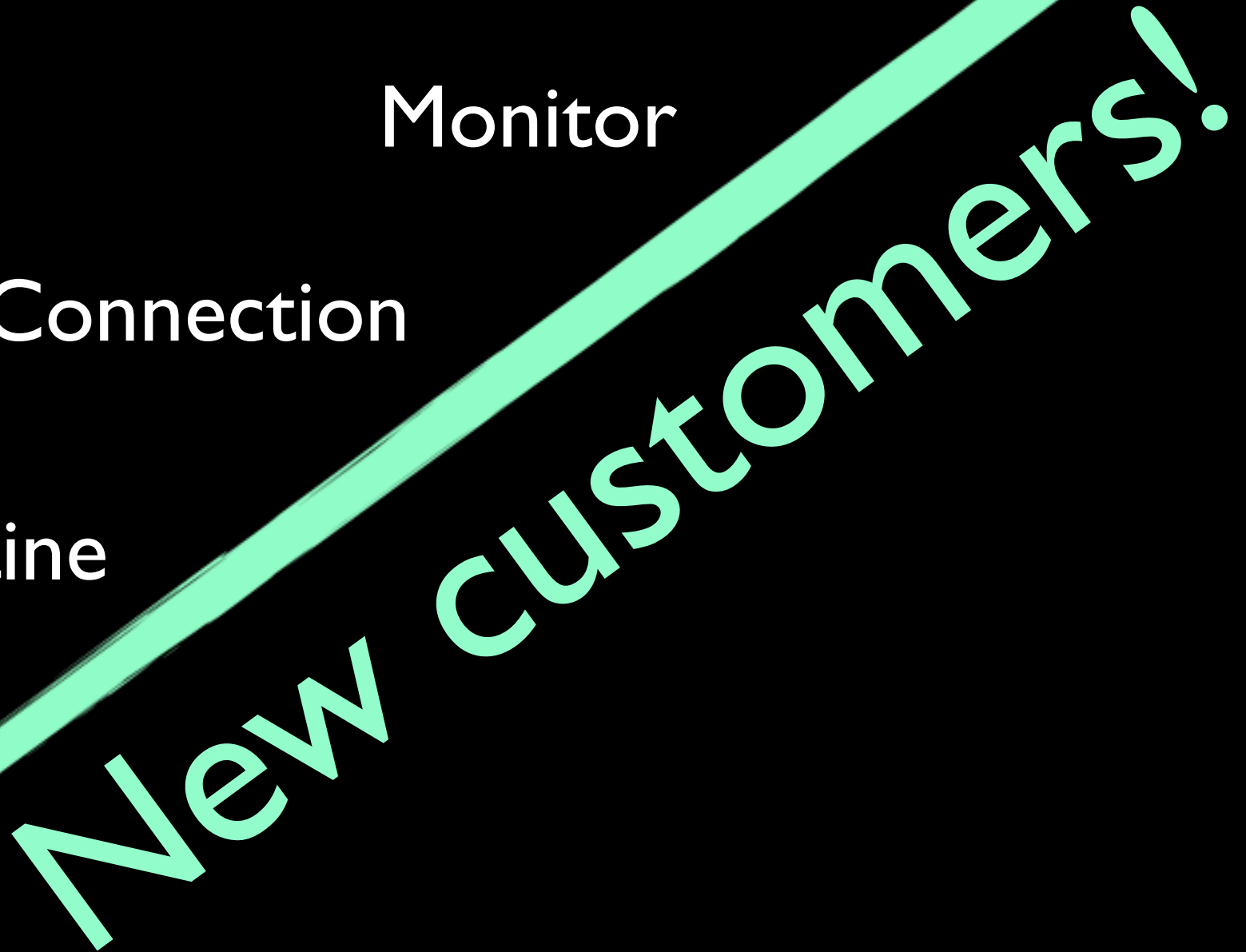
Monitor

Connection

Quarantine

bling

New customers!



Quarantine Process

The background of the slide features a clear blue sky with several strands of rusty, brown barbed wire running diagonally from the bottom left towards the top right. The wire has sharp, twisted points at regular intervals.

New customers

Naughty customers

Prohibited Traffic



Offer **IPv6**

From day one

Same service

level



Congestion

Member Ports

ISLs

ARP Sponge



When larger

Limits spurious

Any Questions?

adavidson@he.net
+44 114 3190605